

Induction Kettle

DIHK223K2

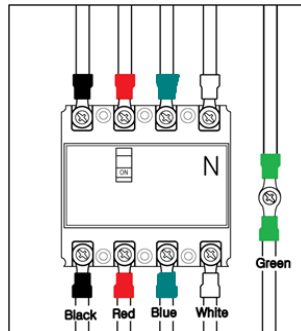


Specification

Electricity	DIHK223K2	380V, 50/60Hz, 3PH+N	Power Consumption	DIHK223K2	21000 W
	DIHK223K2-A	340-420V,		DIHK223K2-A	
	DIHK223K2-E	50/60Hz, 3PH+N		DIHK223K2-E	
Power Connection	Direct Conection to Circuit Breaker		Max Current	31 A	
Conversion to Calory	18144 Kcal/h				
Dimension	1737 X 1330 X 897 (mm) (Lid : Ø1164mm)				
Controller Type	Jog dial, Capacitive button		Container Rotating Way	Handle	
2 Heating Sections	Separate Heating (Bottom : 10.5kw / Middle : 10.5kw)		Container Volume	250 L (500 persons servings)	
Heating	1 - 8 (8 steps)		Features	Boil, Fry, Stir-fry	
Recommendation	Cafeteria, Catering, School, Army				
Functions & Features	■ Safety				
	- Over current indication : "E1"				
	- Over voltage indication : "E2" (Above 420V)				
	- Low voltage : "E3" (Below 340V)				
	- Product over heated indication : "E4" (IGBT Heat Sink above 85°C)				
	- Unstable power indication: "E7"				
- Defective PCB indication : "E8"					
- Defective Working Coil indication : "E9"					
■ Separate Heating					
- increasing efficiency by heating separately, whole kettle, only bottom or top					
Warranty	1 year warranty (must be charged in case of user's negligence)				

Installation Guide

Electric Wiring



- ▶ Electricity : 380V 3PH+N
- ▶ Circuit breaker : 40A or above
- ▶ Cables : 600V/1000V, 6SQMM or above, 4 phase
- ▶ Ground cable separated - 6SQMM or above

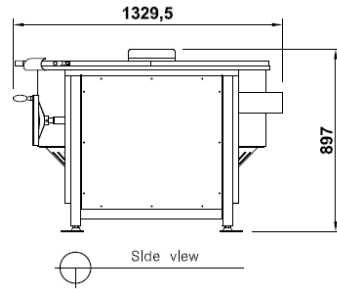
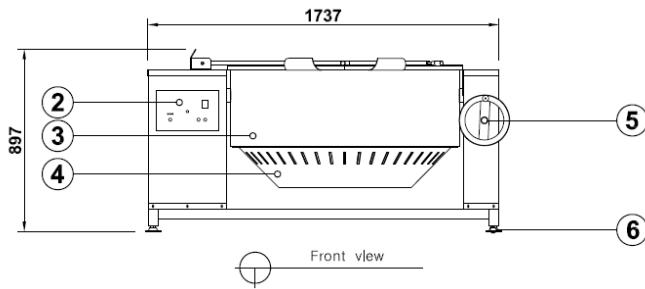
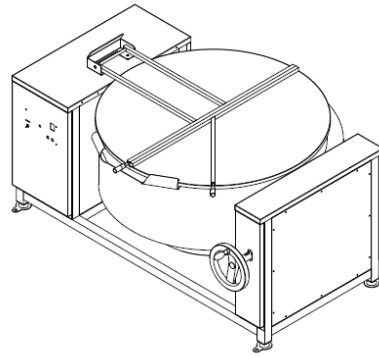
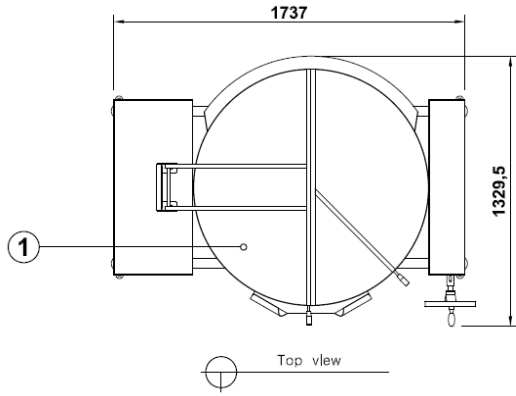
Seoul Office: #75, Ahasan-ro 78-gil, Gwangjin-gu, Seoul, Republic of Korea 04969 / Tel : +82 2-444-5895 / Fax : +82 70-4694-5412

R&D Center: #209, Goraesan-ro, Wabu-eup, Namyangju-si, Gyeonggi-do, Republic of Korea 12202 / Tel : +82 2-444-5895 / Fax : +82 70-4694-5412

DIPO INDUCTION CO., Ltd. / www.dipoele.com

COPYRIGHT©2010 DIPO INDUCTION CO., LTD ALL RIGHTS RESERVED.

Unit



Seoul Office: #75, Ahasan-ro 78-gil, Gwangjin-gu, Seoul, Republic of Korea 04969 / Tel : +82 2-444-5895 / Fax : +82 70-4694-5412

R&D Center: #209, Goraesan-ro, Wabu-eup, Namyangju-si, Gyeonggi-do, Republic of Korea 12202 / Tel : +82 2-444-5895 / Fax : +82 70-4694-5412

DIPO INDUCTION CO., Ltd. / www.dipoele.com

COPYRIGHT©2010 DIPO INDUCTION CO., LTD ALL RIGHTS RESERVED.

Induction Kettle

DIHK223K3

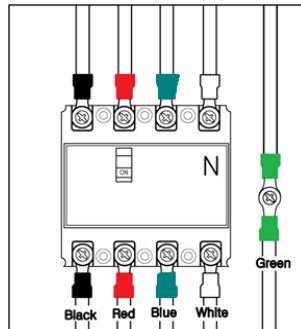


Specification

Electricity	DIHK223K3	380V, 50/60Hz, 3PH+N	Power Consumption	DIHK223K3	31000 W
	DIHK223K3-A	340-420V,		DIHK223K3-A	
	DIHK223K3-E	50/60Hz, 3PH+N		DIHK223K3-E	
Power Connection	Direct Conection to Circuit Breaker		Max Current	45 A	
Conversion to Calory	26784 Kcal/h				
Dimension / Weight	1737 X 1330 X 948 (mm) (Lid : Ø1164mm)				
Controller Type	Jog dial, Capacitive button		Container Rotating Way	Handle	
2 Heating Sections	Separate Heating (Bottom : 10.5kw / Middle : 10.5kw)		Container Volume	350 L (700 servings)	
Heating	1 - 8 (8 steps)		Features	Boil	
Recommendation	Cafeteria, Catering, School, Army				
Functions & Features	■ Safety				
	- Over current indication : "E1"				
	- Over voltage indication : "E2" (Above 420V)				
	- Low voltage : "E3" (Below 340V)				
	- Product over heated indication : "E4" (IGBT Heat Sink above 85°C)				
	- Unstable power indication: "E7"				
- Defective PCB indication : "E8"					
- Defective Working Coil indication : "E9"					
■ Separate Heating					
- increasing efficiency by heating separately, whole kettle, only bottom or top					
Warranty	1 year warranty (must be charged in case of user's negligence)				

Installation Guide

Electric Wiring



- ▶ Electricity : 380V 3PH+N
- ▶ Circuit breaker : 50A or above
- ▶ Cables : 600V/1000V, 10SQMM or above, 4 phase
- ▶ Ground cable separated - 6SQMM or above

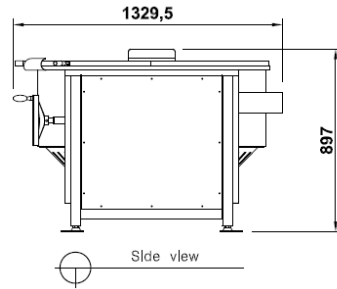
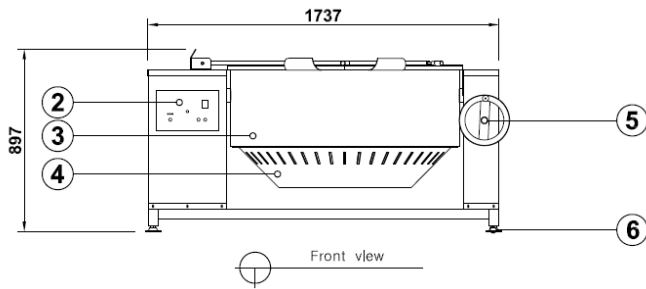
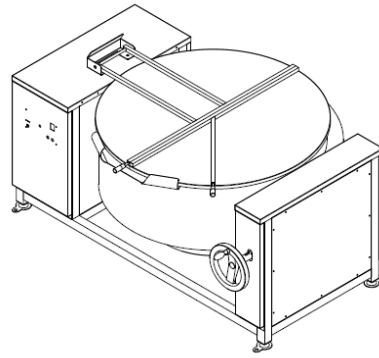
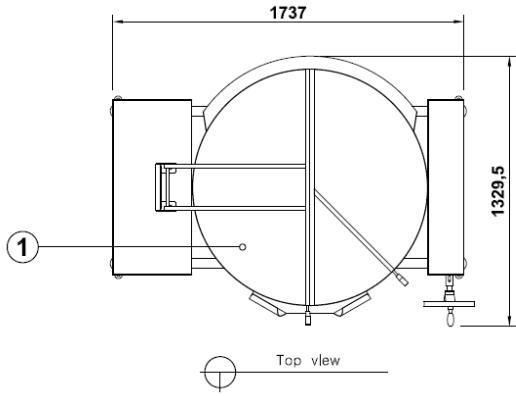
Seoul Office: #75, Ahasan-ro 78-gil, Gwangjin-gu, Seoul, Republic of Korea 04969 / Tel : +82 2-444-5895 / Fax : +82 70-4694-5412

R&D Center: #209, Goraesan-ro, Wabu-eup, Namyangju-si, Gyeonggi-do, Republic of Korea 12202 / Tel : +82 2-444-5895 / Fax : +82 70-4694-5412

DIPO INDUCTION CO., Ltd. / www.dipoele.com

COPYRIGHT©2010 DIPO INDUCTION CO., LTD ALL RIGHTS RESERVED.

Product



Seoul Office: #75, Ahasan-ro 78-gil, Gwangjin-gu, Seoul, Republic of Korea 04969 / Tel : +82 2-444-5895 / Fax : +82 70-4694-5412

R&D Center: #209, Goraesan-ro, Wabu-eup, Namyangju-si, Gyeonggi-do, Republic of Korea 12202 / Tel : +82 2-444-5895 / Fax : +82 70-4694-5412

DIPO INDUCTION CO., Ltd. / www.dipoele.com

COPYRIGHT©2010 DIPO INDUCTION CO., LTD ALL RIGHTS RESERVED.